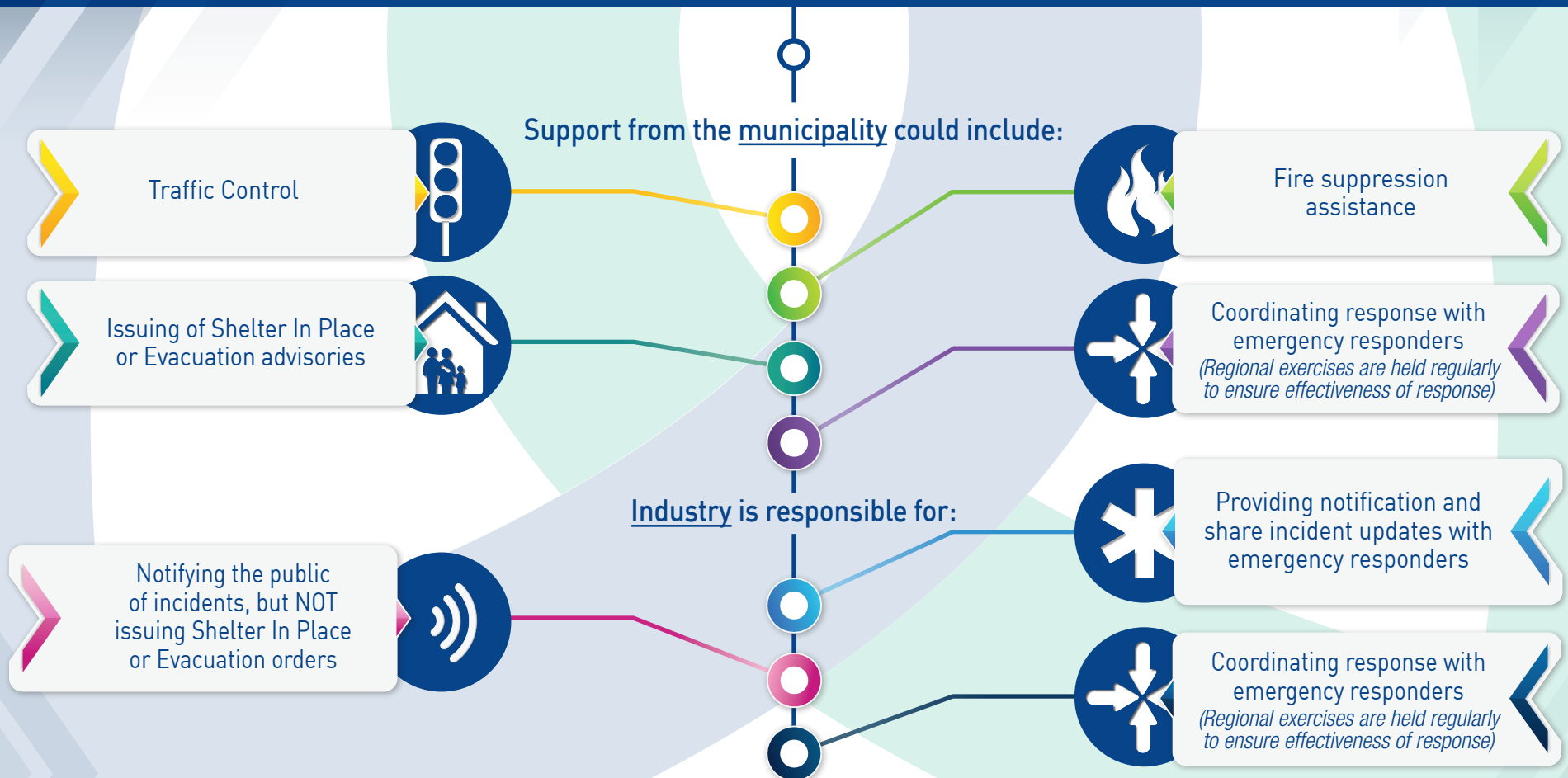


# WHO IS RESPONSIBLE FOR WHAT IN AN EMERGENCY?

- In the event of an INDUSTRIAL EMERGENCY, industry and local government work together closely to respond quickly & effectively.
- Industry and municipal response teams coordinate using regional CAER processes. Response teams may come together through mutual aid processes and unified command may also be established by industrial and municipal response leads as required.



TO RECEIVE NOTIFICATION of incidents at industry sites, [sign up for MyCNN through lambtonbases.ca](https://lambtonbases.ca)